



---

**SLAVONSKI BROD - CROATIA**



# Republic of Croatia

- ❑ Area of Croatia 56 542 km
- ❑ Population 4.224.000
- ❑ Capital city: Zagreb
- ❑ Member of European union since 2013.



- ❑ Agriculture
- ❑ Tourism
- ❑ Industry
- ❑ Trade



# Slavonski Brod



- ❑ The industrial, cultural, administrative, judicial and financial center of the Brodsko-Posavska County
- ❑ It is located on a significant traffic route connecting Europe to Asia
- ❑ Along with the suburban settlements, the population is around 64,600.
- ❑ Metal processing industry
- ❑ Wood processing industry
- ❑ Food industry
- ❑ Construction sector



# Đuro Đaković



- Đuro Đaković is one of the largest industrial groups in Croatia and the region with a long tradition and reputation on the global market.
- Since 1921. Đuro Đaković, in various legal forms had few important areas:
- INDUSTRY AND ENERGETICS
- TRANSPORT
- DEFENCE



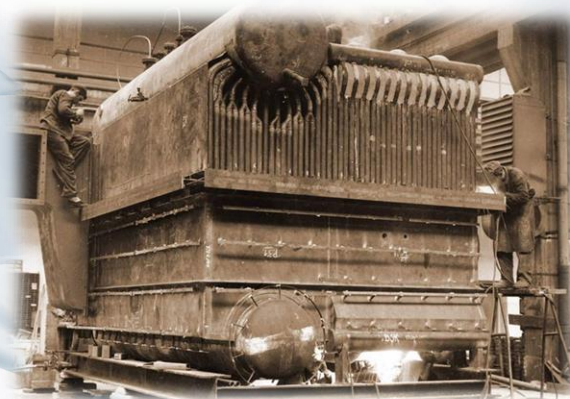
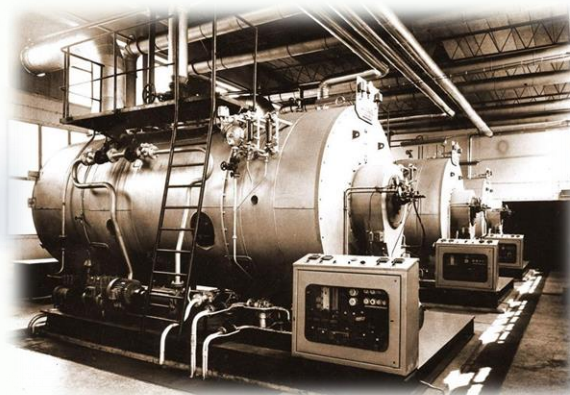
# Some honorable mentions during the past

---

- ❑ 1921 – The Founding Assembly of the shareholders was held and the company was entered into the court registry; the construction of factory buildings started and First Jugoslavenian factory of Locomotive, Machine and Bridge had been founded
- ❑ 1926 – The bridge over the Tisza River near Titel constructed.
- ❑ 1926 – The first railway freight car produced.
- ❑ 1926 – The first steam boiler produced.
- ❑ 1930 – The first chemical and processing industry tank manufactured and installed.
- ❑ 1930 – The first bridge exported to Greece.
- ❑ 1935 – The first bridge crane constructed according to own design.
- ❑ 1935 – The first standard-gauge railway locomotive manufactured.
- ❑ 1938 – The first motor-train for the Sarajevo – Mostar railway line manufactured.
- ❑ 1991 – Founding Assembly of Đuro Đaković Holding d.d. was held, founded by Croatian Development Fund, Croatian Railways and Đuro Đaković Composite Company.
- ❑ 1993 – By decision of the Đuro Đaković Holding Management Board, the company is transformed into a joint stock company. Subsidiaries which make up the Group today operate independently on the market.

# ĐURO ĐAKOVIĆ KOTLOVI d.o.o.

- ❑ 40 years of experience in production of steam and hot oil boilers
- ❑ Energy-efficient projects
- ❑ ĐĐ Kotlovi d.o.o. established in 2002. as a private company with independent business
- ❑ Design, production, maintenance
- ❑ More than 1000 delivered plants



# Products

## □ 1. Boilers for standard gas and liquid fuels

- Boilers for rapid steam production
- Steam block boilers
- Hot oil boilers
- Hot water boilers
- Heating boilers



## □ 2. Biomass boilers, economizers and utilization plants

- Steam utilization boiler:  
500 kW - 7 MW,
- Hot oil utilization boiler:  
500 kW - 5 MW,
- Hot water utilization boiler  
500 kW - 7 MW,





# Products

- 3. Containers & block containers
- 4. Pressure vessels and other equipment





# Application

---



Food industry (milk processing)



Food industry (meat processing)



Food industry (production of chips)



Construction



Oil industry (paraffin removal)



Oil industry (refining of oil and gas)



Heating (schools, hospitals)



Heating (business and production buildings)



# Production capabilities

## ❑ WELDING

- Certificates for welding performance in accordance to EN ISO 3834 and Pressure equipment directive PED 2014/68/EU
- **PQR** for 111 , 121, 135, 136, 141, 311

## ❑ PLASMA CUTTING

- Dimension sheet 1500 x 6000 mm
- Cutting thickness 15 mm

## ❑ BENDING SHEETS PRESS

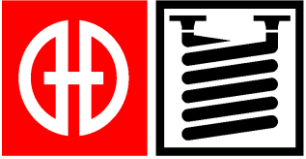
- Width of bending 3 m
- Thickness of sheet metal for bending  $s=10\text{mm}$

## ❑ ANTICORROSION PROTECTION



## ❑ ROLLERS FOR SHEET BENDING

- Width of the sheet metal for bending 2 m
- Thickness of sheet  $s=25\text{ mm}$  with pre-bending (for 25 mm min  $D=1750\text{ mm}$ )
- Thickness of sheet  $s=30\text{ mm}$  without pre-bending



# Production capabilities

## □ TUBE BENDING

- Tube bending up to tube diameter of 76,1 mm

## □ PROFILE BENDING MACHINE

- Bending of pipes in spiral up to 76,1 mm in diameter

## □ CRANES

- Load 25 t, Lift height 8 m - 1 pc
- Load 3 t, Lift height 4 m - 2 pcs

## □ SHEET METAL SHEARS

- Cutting width 3 m - sheet metal thickness 8 mm
- Cutting width 2 m - sheet metal thickness 10 mm

## □ ELECTRICAL WORK

Design and electrical installation

## □ PRODUCTION AND STORAGE AREA

- The production hall of 2500 m<sup>2</sup> with cranes, machines and equipment
- Own roofed storage area for material and final products



## □ Human resources

- Own design office
- Sales and purchasing department
- Technical preparation and production
- Production plant
- ERP integrate planning, design, manufacturing and sales processes



# References



INA , 3 x VKS 5000  
Thermal oil heater  
3 x 5 MW



DUBROVAČKI VRTOVI SUNCA  
2 x VPS 600  
2 x 600 kg/hr steam



LUKA BAR, VKS 700  
Thermal oil heater  
1 x 700 kW



BRODOGRADILIŠTE V. LENAC  
Steam container boiler room  
3000 kg/hr steam 12,6 bar



SLAVONIJA I.G.M.  
2 x VPS 1500  
2 x 1500 kg/hr steam



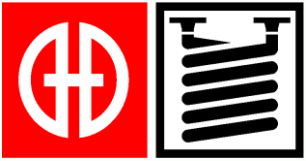
HIDROELEKTRA NISKOGRADNJA  
VKS 400  
1 x 400 kW



VITA LIFE , Visoko  
VPS 500  
500 kg/hr steam



FRANCK d.d.  
VKS 1500  
1 x 1500 kW



# References



VUPIK d.d., Vukovar, Steam container boiler room, VPS 300 - 300 kg/hr - 2,7 bar



PECON d.o.o., Zagreb, Steam block boiler plant VPS 75 - 75 kg/hr pare - 12,6 bar



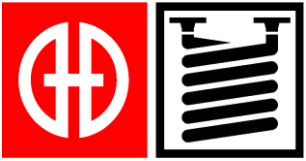
BILJEMENRKANT, Osijek, Hot water Low temperature boiler TNK 200 kW



AFROTROPIC COCOA PROCESING Co. Ltd., Gana  
Steam container boiler room, 600 kg /hr - 12,6 bar



AEKS d.o.o., Ivanić Grad  
Steam container boiler room  
1500 kg/hr - 100 bar



# References



ZDENKA  
Steam fire tubes boiler 5 t/hr and 10 t/hr



MMM VUKELIĆ  
Hot water boiler 4MW, sawdust



ENERGIJA GRADEC, bio gas  
plant; hot oil boiler 500kw and  
heating boiler 500kw





# References



SPAČVA d.d.,  
Wood industry  
Hot water boiler 5MW  
180°C,  
Fired with wood chips





# References

---



NIS- Naftna industrija Srbije Novi Sad  
(GASPROM-RUSIJA)

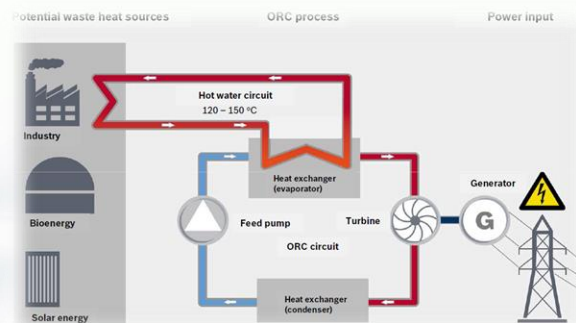
Steam container boiler room  
1500kg steam/hr, 100bar

Mobile boiler can stand :

- Independently
- On a truck
- In a boat

# Cogeneration plants

- a) 100 kWe / 500 kW thermal
- b) 200 kWe / 1000 kW thermal
- c) 300 kWe / 1500 kW thermal
- d) 400 kWe / 2000 kW thermal
- f) 500 kWe / 2500 kW thermal
- g) 600 kWe / 3000 kW thermal
- h) 700 kWe / 3500 kW thermal
- i) 1000kWe / 5000kW thermal







Đuro Đaković Kotlovi d.o.o.

Dr. Mile Budaka 1,  
35000 Slavonski Brod  
Hrvatska

**[www.kotlovi.hr](http://www.kotlovi.hr)**

tel: +385 35 444 755

fax: +385 35 447 503

e-mail: [info@kotlovi.hr](mailto:info@kotlovi.hr)